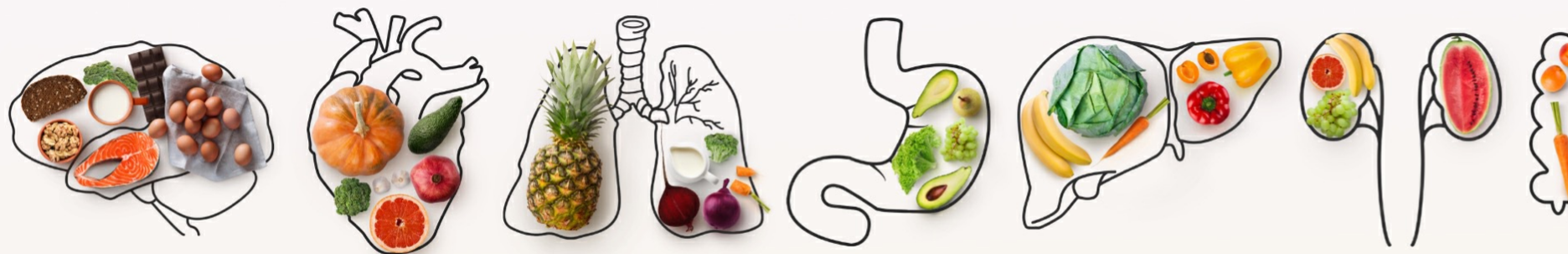


Precision Nutrition Research Gaps and Op



Date	Time	Track	Presentation Title	Speaker
11-Jan	09:00 - 11:30 AM	SECTION 1: Precision Nutrition Science in Diet-related Chronic Diseases	Opening Remarks	Griffin P. Rodgers, MD, M/ Director of the National In Gary H. Gibbons, MD Director, NHLBI
11-Jan	09:25 - 09:45 AM	SECTION 1: Precision Nutrition Science in Diet-related Chronic Diseases	Moderator Introduction & Cardiovascular Disease	José Ordovás, PhD Director of Nutrition and C
11-Jan	09:45 - 10:00 AM	SECTION 1: Precision Nutrition Science in Diet-related Chronic Diseases	Precision Nutrition for Patients at Risk for Cognitive Decline & Alzheimer's Dementia	Richard Isaacson, MD Director, Alzheimer's Prev
11-Jan	10:00 - 10:15 AM	SECTION 1: Precision Nutrition Science in Diet-related Chronic Diseases	Diabetes/Impaired Glucose Regulation	Mary Ann Sevick, ScD, MS, Professor of Population He
11-Jan	10:15 - 10:30 AM	SECTION 1: Precision Nutrition Science in Diet-related Chronic Diseases	Cancer: Primary and Secondary Prevention	Emily Ho, PhD Professor and Endowed Ch
11-Jan	10:30 - 11:30 AM	SECTION 1: Precision Nutrition Science in Diet-related Chronic Diseases	Section 1 Q & A Panel Discussion: Research Gaps and Opportunities (Live)	Linda Van Horn, PhD, RDN Professor and Chief, Nutrit Corby Martin, PhD Pennington Biomedical Re Steven Clinton, MD, PhD Professor, Medical Oncolo Paul Franks, PhD Professor of Genetic Epide Simin Nikbin Meydani, DVI Senior Scientist & Directo Immunology at Tufts Emily Ho, PhD Professor and Endowed Ch Mary Ann Sevick, ScD, MS, Professor of Population He Richard Isaacson, MD Director, Alzheimer's Prev

11-Jan	11:45 - 12:15 PM	SECTION 2: NIH Interest in the Field of Precision Nutrition	Planning for Nutrition for Precision Health, Powered by the All of Us Research Program	Holly Nicastro, PhD, MPH Program Director, Office of
11-Jan	01:00 - 01:05 PM	SECTION 3.1: Measuring Potential Contributors to Interindividual Variability in Dietary Responses	Moderator Introduction	Elizabeth Parks, PhD Professor, Department of I
11-Jan	01:05 - 01:20 PM	SECTION 3.1: Measuring Potential Contributors to Interindividual Variability in Dietary Responses	Importance of Examining Nutritional Status as a Source of Interindividual Variability	Marian Neuhouser, PhD, R Professor, Fred Hutchinson
11-Jan	01:20 - 01:35 PM	SECTION 3.1: Measuring Potential Contributors to Interindividual Variability in Dietary Responses	Immune System Status and Inflammatory Responses to Diet	Helen Roche, PhD Full Professor of Nutrition
11-Jan	01:35 - 01:50 PM	SECTION 3.1: Measuring Potential Contributors to Interindividual Variability in Dietary Responses	Sleep and Chronobiology	Frank Scheer, PhD, MSc Professor of Medicine, Har
11-Jan	01:50 - 02:05 PM	SECTION 3.1: Measuring Potential Contributors to Interindividual Variability in Dietary Responses	Nutrition-related Health Disparities, Socioeconomic Influences, and Social Determinants of Health	Josiemer Mattei, PhD, MPH Donald and Sue Priztker A
11-Jan	02:05 - 02:20 PM	SECTION 3.1: Measuring Potential Contributors to Interindividual Variability in Dietary Responses	Psychosocial and Cultural Factors Influencing Dietary Intake and Patterns	Cheryl Anderson, PhD, MP Professor and Dean, UC Sa Excellence in Health Beha
11-Jan	02:20 - 02:45 PM	SECTION 3.1: Measuring Potential Contributors to Interindividual Variability in Dietary Responses	Section 3, Part 1 Q & A	Elizabeth Parks, PhD Professor, Department of I Cheryl Anderson, PhD, MP Professor and Dean, UC Sa Excellence in Health Beha Josiemer Mattei, PhD, MPH Donald and Sue Priztker A Frank Scheer, PhD, MSc Professor of Medicine, Har Helen Roche, PhD Full Professor of Nutrition Marian Neuhouser, PhD, R Professor, Fred Hutchinson
11-Jan	03:00 - 03:15 PM	SECTION 3.2: Measuring Potential Contributors to Interindividual Variability in Dietary Responses	Other Environmental Exposures	Albert-Laszlo Barabasi, Ph Robert Gray Dodge Profes
11-Jan	03:15 - 03:30 PM	SECTION 3.2: Measuring Potential Contributors to Interindividual Variability in Dietary Responses	Mixed-meal Challenge Tests, Physiological Measures, and Individual Response to Alcohol	Elizabeth Parks, PhD Professor, Department of I
11-Jan	03:30 - 03:45 PM	SECTION 3.2: Measuring Potential Contributors to Interindividual Variability in Dietary Responses	Sensory Nutrition	Valerie Duffy, PhD, RD Professor & Director of the
11-Jan	03:45 - 05:00 PM	SECTION 3.2: Measuring Potential Contributors to Interindividual Variability in Dietary Responses	Section 3, Part 2 Q&A and Panel Discussion: Research Gaps and Opportunities	Saroja Voruganti, PhD Associate Professor of Nut Krista Varady, PhD Professor of Nutrition Erin Hanlon, PhD Research Associate Profes Susan Malone, PhD, MSN Assistant Professor, Rory I
12-Jan	09:00 - 09:15 AM	SECTION 4: Training the Next Generation of a Diverse Workforce of Researchers in the Fields of Precision Nutrition and Data Science	Introduction to Training the Next Generation of a Diverse Workforce of Researchers in the Fields of Precision Nutrition and Data Science	Bruce Y. Lee, MD, MBA Professor of Health Policy Director of PHICOR
12-Jan	09:00 - 09:55 AM	SECTION 4: Training the Next Generation of a Diverse Workforce of Researchers in the Fields of Precision Nutrition and Data Science	Strategies to Retain Trainees and Hybrid Field	Patricia Mabry, PhD Research Investigator, He
12-Jan	09:15 - 09:35 AM	SECTION 4: Training the Next Generation of a Diverse Workforce of Researchers in the Fields of Precision Nutrition and Data Science	Strategies to Retain Trainees and Hybrid Fields: NIH Office of Behavioral and Social Sciences Research T32 Training Program	Elizabeth Ginexi, PhD Office of Behavioral and Sc

12-Jan	09:55 - 10:30 AM	SECTION 4: Training the Next Generation of a Diverse Workforce of Researchers in the Fields of Precision Nutrition and Data Science	Section 4 Q&A and Panel Discussion, Training Recommendations, and Opportunities	Susan Gregurick, PhD Associate Director for Data Michael Hittle, BS Doctoral Student in Epidemiology Jessica Mazerik, PhD Program Director for Data Lorene Nelson, PhD, MS Associate Professor, Department of Shurjo Sen, PhD National Human Genome Research Institute Patricia Mabry, PhD Research Investigator, Health Elizabeth Ginexl, PhD Office of Behavioral and Social Sciences Bruce Y. Lee, MD, MBA Professor of Health Policy Director of PHICOR
12-Jan	10:45 - 11:00 AM	SECTION 5.1: Systems Science, Data Science, and Computational Analytics	Introduction to System Science and Data Analytics	Bruce Y. Lee, MD, MBA Professor of Health Policy Director of PHICOR
12-Jan	11:00 - 11:15 AM	SECTION 5.1: Systems Science, Data Science, and Computational Analytics	Precision Public Health Nutrition: Addressing the Social-ecological Settings in Which People Access and Consume Food	Kayla de la Haye, PhD Assistant Professor of Precision
12-Jan	11:15 - 11:30 AM	SECTION 5.1: Systems Science, Data Science, and Computational Analytics	Data Analytics and Management: Artificial Intelligence, Such as Machine Learning	Suchi Saria, PhD, MSc Director of the Machine Learning Public Health, Johns Hopkins
12-Jan	11:30 - 11:45 AM	SECTION 5.1: Systems Science, Data Science, and Computational Analytics	Data Analytics and Management: Artificial Intelligence is more than AI	Kristian Hammond, PhD, M Northwestern University
12-Jan	11:45 - 12:45 PM		Section 5, Part 1 Q & A	Bruce Y. Lee, MD, MBA Professor of Health Policy Director of PHICOR Kayla de la Haye, PhD Assistant Professor of Precision Suchi Saria, PhD, MSc Director of the Machine Learning Public Health, Johns Hopkins Kristian Hammond, PhD, M Northwestern University
12-Jan	01:00 - 01:15 PM	SECTION 5.2: Systems Science, Data Science, and Computational Analytics	Interpretation and Translation	Nico Pronk, PhD President and Chief Scientist Visiting Scientist, Harvard
12-Jan	01:15 - 01:30 PM	SECTION 5.2: Systems Science, Data Science, and Computational Analytics	Ethical Artificial Intelligence	Brendan Parent, JD Assistant Professor of Medicine
12-Jan	01:30 - 02:45 PM	SECTION 5.2: Systems Science, Data Science, and Computational Analytics	Section 5, Part 2 Q&A and Panel Discussion, Research Gaps and Opportunities, and Case Examples	Eran Segal Professor at the Department of Tim Spector, MBBS, MD, M FRCP, King's College London Abigail L. Horn, PhD Postdoctoral Research Fellow Grace Peng, PhD Director of Mathematical and Institutes of Health Nico Pronk, PhD President and Chief Scientist Visiting Scientist, Harvard Brendan Parent, JD Assistant Professor of Medicine
12-Jan	03:00 - 04:40 PM	SECTION 6: Putting It All Together: What Does the Future Hold for Implementing Precision Nutrition Science?	Panel Discussion with Co-Chairs	Bruce Y. Lee, MD, MBA Professor of Health Policy Director of PHICOR Elizabeth Parks, PhD Professor, Department of José Ordovás, PhD Director of Nutrition and

12-Jan	03:00 - 04:45 PM	SECTION 6: Putting It All Together: What Does the Future Hold for Implementing Precision Nutrition Science?	Workshop Adjournment	José Ordovás, PhD Director of Nutrition and C Bruce Y. Lee, MD, MBA Professor of Health Policy Director of PHICOR Elizabeth Parks, PhD Professor, Department of I
12-Jan	03:00 - 04:45 PM	SECTION 6: Putting It All Together: What Does the Future Hold for Implementing Precision Nutrition Science?	Workshop Closing Remarks	Elizabeth Parks, PhD Professor, Department of I José Ordovás, PhD Director of Nutrition and C Bruce Y. Lee, MD, MBA Professor of Health Policy Director of PHICOR